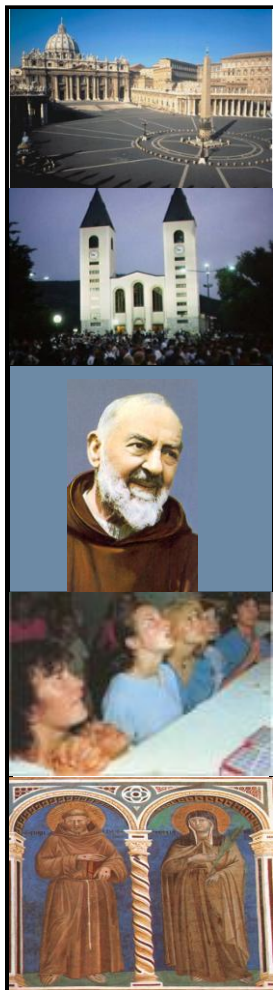




ITALY AND MEDJUGORJE 2009 Special LAX departure.

October 25th – November 9th (16 Days) \$2,895

Come pilgrimage with us, as Chaplain Fr. Don Woznicki joins us on a Spiritual journey met by ace local guide Miki Musa.



ITINERARY

- OCT 25(Sun.) Depart **Los Angeles International Airport (LAX)**
- OCT 26 Arrive in Rome - Visit **St. Paul's Basilica & Tre Fontane**. Overnight in Rome.
- OCT 27 See the Vatican. **St. Peter's Square** and optional Sistine Chapel or shopping.
- OCT 28 **Papal Audience**. Tour Rome. **Basilicas, Holy Stairs, Church of the Holy Cross**, and more.
- OCT 29 Leave Rome for **San Giovanni Rotondo** (St. Padre Pio's shrine). Overnight. If time allows: **Monte Cassino** (monastery of St. Benedict) & **St. Michael's Cave**.
- OCT 31 Visit **Padre Pio's shrine** & Eucharistic miracle at **Lanciano**, Then to Ancona. Catch Ferry 9 pm. Overnight in Ferry: Adriatic Sea.
- OCT 31 (Sat.) Arrive in Split in Croatia at 8 am. Bus to Medjugorje.
- OCT 31 – NOV 5 **Medjugorje** . Overnight in Medjugorje 5 nights.
- NOV 5 Depart Medjugorje in PM to catch 9 pm Ferry in Split. Overnight in Ferry.
- NOV 6 Arrive in Ancona 7 am. Go to House of Loreto. Transfer to Assisi.
- NOV 7 **Day in Assisi**. See St. Francis & St. Clare Basilicas, San Damiano, and more.
- NOV 8 Visit **St. Mary of the Angels**. Free Afternoon for shopping & sightseeing.
- NOV 9 (Mon.) Depart Assisi for Airport: Arrive in LAX P.M.

Price: \$2,895 \$200 deposit due July 25th, 2009. Remaining balance due Aug 25th, 2009.

Latecomers are welcome to try and get on the trip.

***Non US Citizens are required to get their own VISA's**

<p>Payment Includes: Air/Bus/Transportation/Bed/Breakfast/Dinner/Taxes Not Included: Tips \$125 per person, lunches, Alcoholic beverages, etc. (Single supplement & visa fee if applicable.) Travel Insurance \$200 deposit must be sent 120 days prior to departure and the remaining balance 90 days before. Latecomers encouraged to call.</p>	<p>Send Checks (no credit cards) Payable to: Totally Yours Co. P.O. Box 897 Hillside, IL 60162 Print Clearly: include name (as is spelled on passport), address, phone and options desired with your \$200 deposit. (Include with deposit copy of Passport photo page.)</p>	<p>Refund Policy Cancellations from departure date: *If airline tickets have been purchased, this amount will be fully deducted from the refund. Before 150 days..... Full Refund 149 – 100 days..... Total less \$200 99 - 30 days..... 25% Refund 29 - 3 days..... 10% Refund Priests (Chaplains) Free, Religious Brothers and Sisters half price.</p>	<p>Travel Insurance and Visas For travel insurance, Contact us at 1- 630-279-8424 US passport is required for travel. Non US citizens must contact our office at least 90 days before the Pilgrimage for obtaining a visa. \$110 assist in processing fee plus direct embassy fee. (It is the responsibility of the traveler to obtain a Visa.) Prices, dates, and locations are Subject to change without notice.</p>
--	--	---	---